

NSL075



## SIZES

Small (Medium, Large, X-Large)

**To fit bust** 32-34 (34-36, 36-38, 38-40)in/81-86 (86-91, 91-96, 96-101)cm.

## FINISHED MEASUREMENTS

**Width (underarm)** 40 (42, 44, 46)in/101 (106, 112, 116)cm.

**Length** 22 (23, 24, 25)in/56 (58, 61, 63)cm.

**Sleeve length** 19 (19, 19, 19)in/48 (48, 48, 48)cm.

## MATERIALS

5 (5, 6, 6) x 50g skeins of Noro **Kureyon** in shade 438 (A).

2 (2, 2, 2) x 150g balls of Noro **Malvinas** in shade 14 (B).

One pair size US 7/4.5mm needles.

One pair size US 8/5mm needles.

## GAUGE

15½ sts and 23 rows = 4in/10cm over stockinette st using size US 8/5mm needles.

TAKE TIME TO CHECK GAUGE.

## ABBREVIATIONS

**alt** alternating; **beg** begin/beginning; **cont** continue; **dec** decrease; **fol** following; **inc** increasing; **k** knit; **p** purl; **rem** remain/remaining; **rep** repeat; **RS** right side; **st(s)** stitch(es); **tog** together; **WS** wrong side.

## INSTRUCTIONS

### Back

With US 7/4.5mm needles and shade A, cast on 72 (76, 80, 84) sts and work as follows:

**Row 1 (RS):** Knit to end.

**Row 2:** Purl to end.

Rep the last 2 rows for a further 10 rows.

Change to US 8/5mm needles and cont in shade B as follows:

**Row 1 (RS):** Knit to end.

**Row 2:** Purl to end.

Rep the last 2 rows AT THE SAME TIME dec 1 st at each end of row 3 and every foll 6th row 4 times (5sts dec at each side)—62 (66, 70, 74) sts rem.

Work 3 rows.

**Next row (RS):** Knit to end.

**Next row:** Purl to end.

Rep the last 2 rows AT THE SAME TIME inc 1 st at each end of the next row and every foll 5th row 7 times (8 sts inc at each side)—78 (82, 86, 90) rows.

Work 2 rows.

### Shape Armholes

Cast off 3 sts at the beg of the next 2 rows.

Then dec 1 st at each end of the foll 6 rows—60 (64, 68, 72) sts rem.

Work straight until armhole measures 7½ (8, 8½, 9)in/19 (20.5, 21.5, 23)cm ending with a WS row.

### Shape Shoulders & Back Neck

**Row 1 (RS):** Cast off 4 (5, 5, 5) sts and knit to end.

**Row 2:** Cast off 4 (5, 5, 5) sts and purl to end.

**Row 3:** Cast off 4 (4, 5, 5) sts, knit until 10 (10, 10, 11) sts on right hand needle, turn and put rem sts on a spare needle.

**Row 4:** Cast off 2 sts and purl to end.

**Row 5:** Cast off 4 (4, 4, 5) sts and knit to end.

**Row 6:** Purl to end.

Cast off rem 4 (4, 4, 4) sts.

Return to the sts on the spare needle.

With RS facing, rejoin yarn and cast off the centre 24 (26, 28, 30) sts.

Complete 2nd side of neck to match the first side, reversing shaping.







### Front

Cast on and work as for Back until Front is 18( 20, 22, 24) rows shorter than Back, measuring from top of shoulder.

#### Shape Front Neck

Knit 22 (24, 26, 28) sts and put rem sts on a spare needle. Turn P2tog and purl to end.

Cont to dec 1 st at neck edge on the next 5 (6, 7, 8) rows—16 (17, 18, 19) sts rem.

Work 5 (6, 7, 8) rows straight.

#### Shape shoulder

**Row 1 (RS):** Cast off 4 (5, 5, 5) sts and knit to end.

**Row 2:** Purl to end.

**Row 3:** Cast off 4 (4, 5, 5) sts and knit to end.

**Row 4:** Purl to end.

**Row 5:** Cast off 4 (4, 4, 5) sts and knit to end.

**Row 6:** Purl to end.

Cast off rem 4 (4, 4, 4) sts.

Return to the sts on the spare needle. Slip the centre 16 sts onto a st holder for neckband.

With RS facing, rejoin yarn to rem 22 (24, 26, 28) sts and complete to match first side, reversing shapings.

### Sleeves

With US 7/4.5mm needles and shade A, cast on 54 (56, 58, 60) sts and work as follows:

**Row 1 (RS):** Knit to end.

**Row 2:** Purl to end.

Rep the last 2 rows for a further 10 rows.

Change to US 8/5mm needles and cont in shade A as follows:

**Row 1 (RS):** Knit to end.

**Row 2:** Purl to end.

Rep the last 2 rows **AT THE SAME TIME** dec 1 st at each end of row 3 and every foll 10th row 4 times (5 sts dec at each side)—44 (46, 48, 50) sts rem.

Work 13 rows straight.

**Next row (RS):** Knit to end.

**Next row:** Purl to end.

Rep the last 2 rows **AT THE SAME TIME** inc 1 st at each end of the next row and every foll 8th row 5 times—56 (58, 60, 62) sts.

Work 5 rows straight.

#### Shape Top

Cast off 3 sts at the beg of the next 2 rows.

Then cast off 2 sts at the beg of the foll 10 rows. Then dec 1 st at each end of the next row and every foll alt row 8 times.

Cast off rem 12 (14, 16, 18) sts.

### Neckband

Join right shoulder seam.

With RS facing, US 7/4.5mm needles and shade A, pick up and knit 15 (16, 17, 18) sts evenly down left front neck edge, 16 sts across centre front from st holder pick up and knit 15 (16, 17, 18) sts evenly up right front neck edge and 30 (32, 34, 36) sts across back neck—76 (80, 84, 88) sts.

**Next row (WS):** Purl to end.

**Next row:** Knit to end.

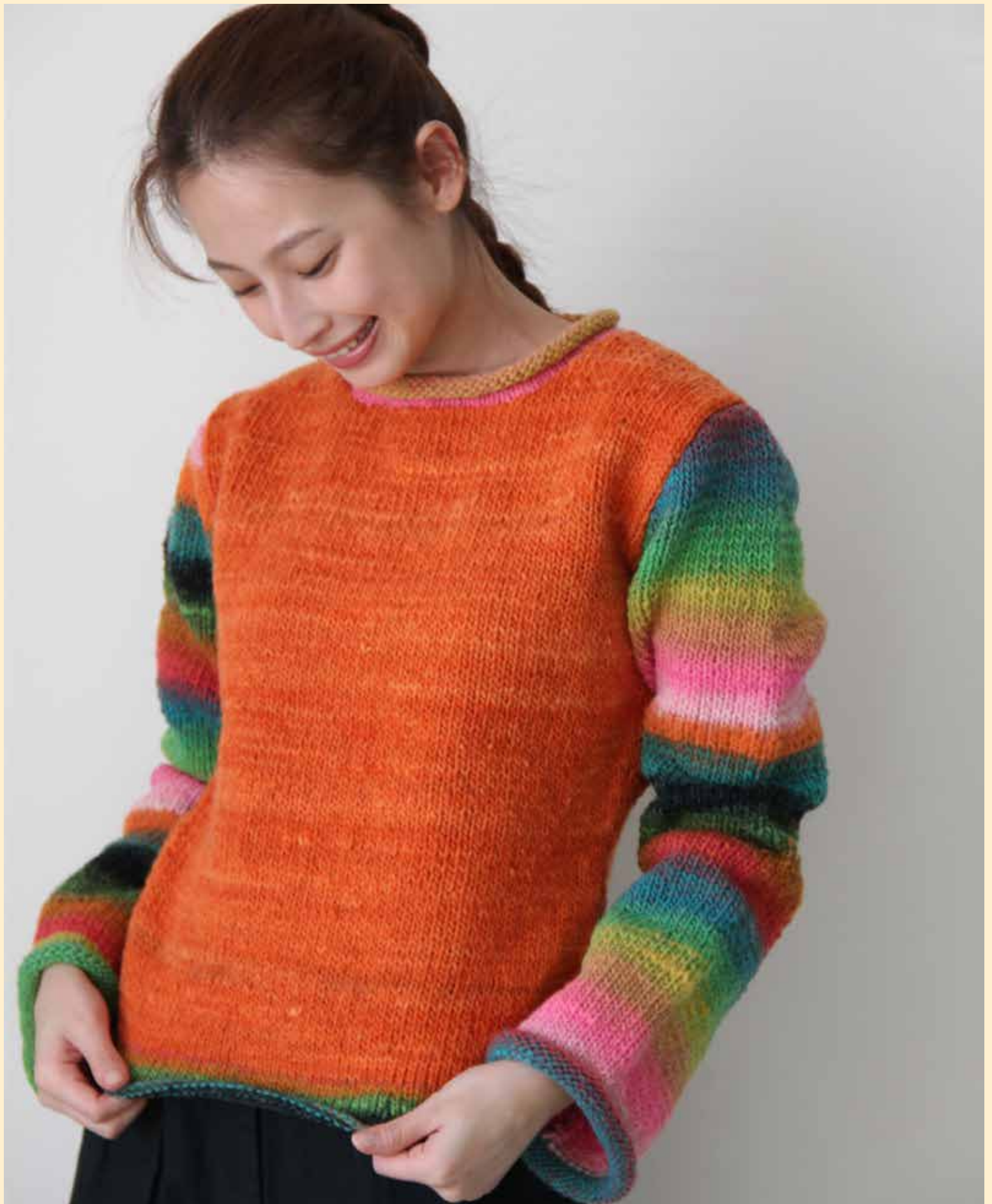
Rep the last 2 rows for a further 10 rows.

Cast off.

### Finishing

Join left shoulder and neckband seams reversing neckband seam for roll down. Sew in sleeves thus: pin centre point of sleeve cast off edge to shoulder seam and stitch to body working from underarm up to shoulder. Sew up side and sleeve seams reversing seam on lower hem for roll. ■





Copyright © 2023 Knitting Fever, Inc. 315 Bayview Avenue, Amityville, New York 11701. [knittingfever.com](http://knittingfever.com). All Rights Reserved. No part of this publication may be copied or reproduced, stored in a retrieval system, or transmitted in any form or by any means electronic, electrostatic, magnetic, mechanical, photocopying, recording or otherwise without permission in writing of the copyright owner. The knitwear design/s in this publication is/are intended for personal use only and may not be knitted for sale. This publication is protected by international copyright laws and is sold on the condition that it is used for non-commercial purposes. Measurements, gauge, and other information, are included as a guideline. If you have any questions about this project, please contact us at [knittingfever.com](http://knittingfever.com).

**Find Knitting Fever in these social media platforms:**

